

Flint Hills Resources LP Pine Bend Land use and Sustainability Plan 2009





Current Use

- ~4000 acres of property total
- ~1000 acres consumed by refinery operations.
- ~1500 acres leased by local farmers.
- ~1500 acres in set aside land primarily for buffer and conservation.

Buffer Property Purpose

- To maintain a sufficient distance between the Pine Bend refinery and the public to ensure operational safety and security.
- To minimize development, planning and activities that would bring large gatherings of people for frequent and or long periods of time.

Buffer Property Purpose (cont)

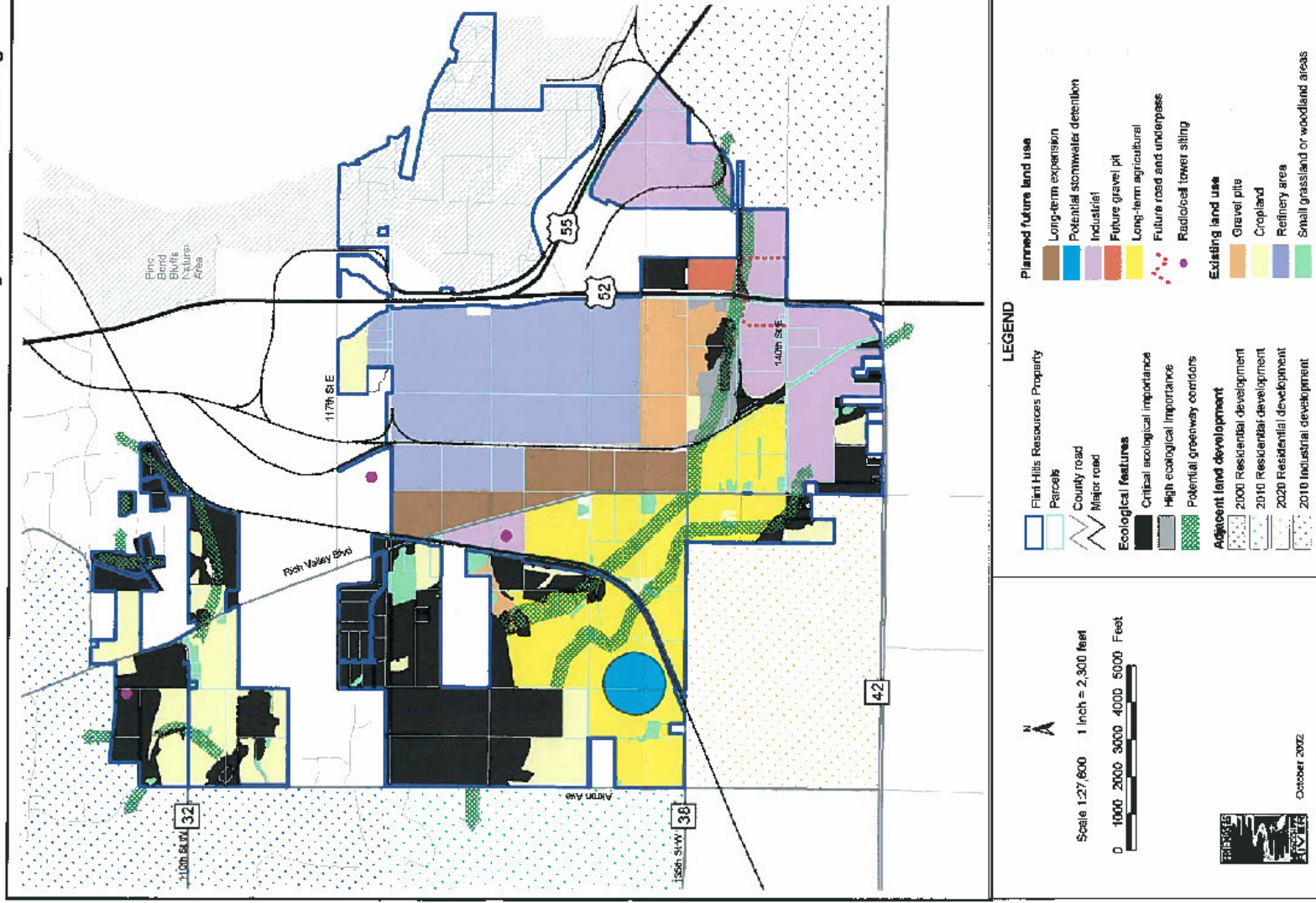
- To the extent possible.....
- Minimize development that would be unfavorable to our neighbors.
- Maximize Habitat preservation.
- Enhance existing natural areas.
- Preserve and conserve undeveloped land.
- Restore land that has been degraded by invasive / exotic species.

Refinery Buffer Property.



Ecologically Diverse Areas

FLINT HILLS RESOURCES, INC. Long-Term Land Use Planning

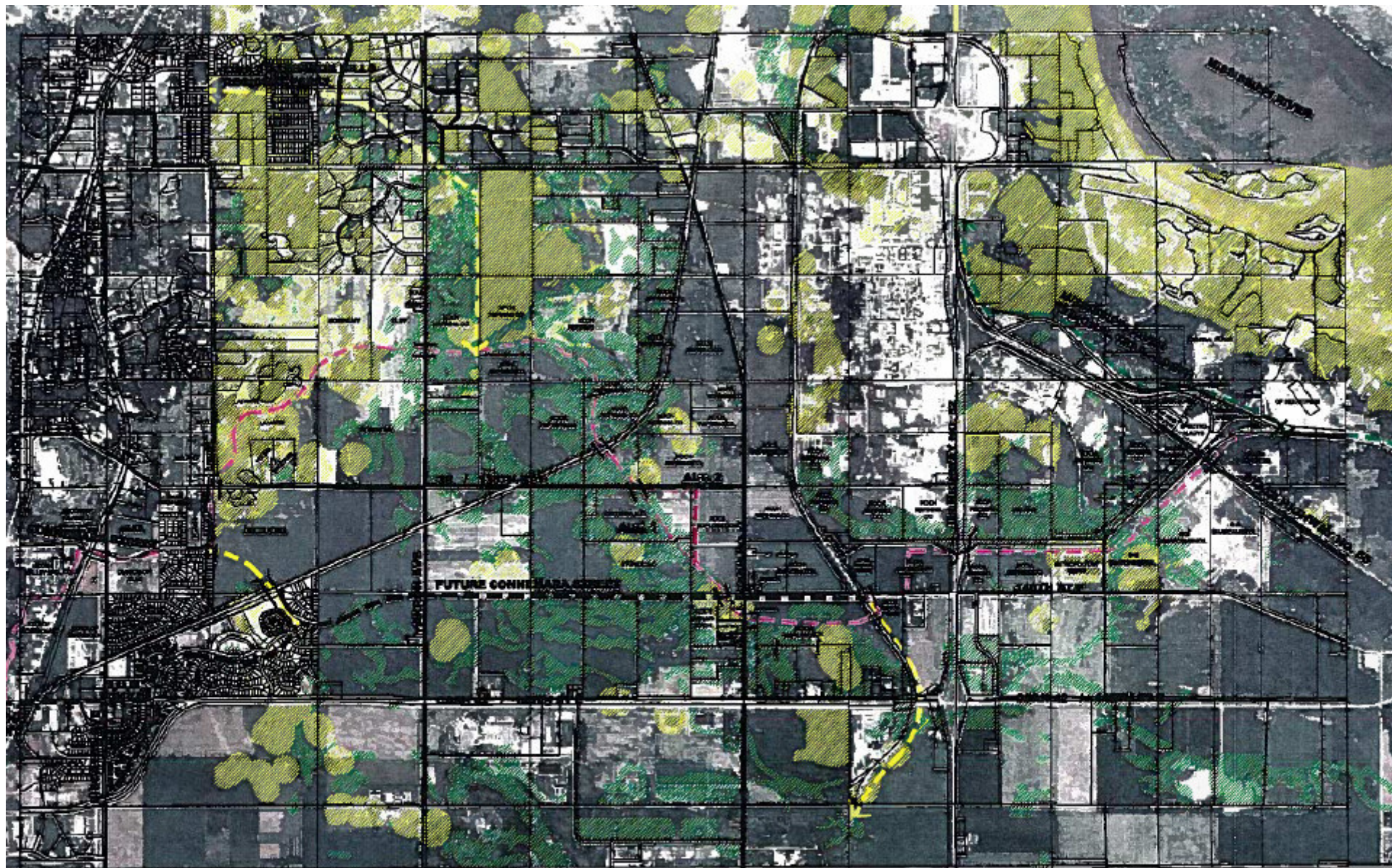


Current Initiatives

- Pine Bend Bluffs restoration and invasive species removal.
- Dakota County Bike Trail system.
- Rosemount City Bike Trail connection.
- Potential Rosemount storm ponds.
- Tree planting.
- Dakota county MAAG facility
- Fire training at abandon houses.
- Rosemount park donation.

Current Initiatives (cont)

- Agriculture with local farmers
- FHR is considering conservation easements on several parcels.
- Bird watching.
- IGH and Rosemount Comprehensive plan development and updates.
- Maintain a secure operation by leveraging buffer and monitoring.
- Rosemount 57 acre donation.
- Snowmobile trails.
- Long term sand / gravel lease.



UNT INTERPRETIVE CORRIDOR STUDY 2004

2003 aerial photo courtesy of the National Agriculture Imagery Program,
U.S. Department of Agriculture, Farm Services Agency (FSA),
Aerial Photography Field Office



CORRIDOR OPPORTUNITIES
JTE

CROSSINGS
SEPARATED CROSSING
AT GRADE CROSSING

MISSISSIPPI RIVER GREENWAY OPPORTUNITIES
HIGH LEVEL SENSITIVE AREAS
LOW LEVEL SENSITIVE AREAS



(Flin



Prepared by: Dakota County
Source: Aerial Express August

Partnerships

- Friends of the Mississippi River
- Great River Greening
- Minnesota DNR
- Dakota County
- City of Rosemount / Inver Grove Heights.
- Hastings High School.
- National Fish and Wildlife Foundation.
- CAC
- U-More
- WHC
- Others

Pine Bend Bluffs





Protect habitat for wildlife - e.g. charismatic mini-fauna













Acorn planting Event





Bluebird Nesting program headed by FHR employee Joel Mielke



WHC Certification

- FHR has been Wildlife Habitat Certified for the last 6 years.
- FHR was nominated for the “Partnership of the year” and “Corporate habitat of the year” in 2009.

In honor of outstanding commitment to the
enhancement of wildlife habitat and biodiversity

the

Wildlife Habitat Council

proudly recognizes the nomination of

Flint Hills Resources, LP
Flint Hills Resources, LP Pine Bend
Inver Grove Heights, Minnesota

for the

2009

CORPORATE HABITAT OF THE YEAR



In honor of outstanding efforts in
environmental stewardship

the

Wildlife Habitat Council

proudly recognizes the nomination of

***Friends of the Mississippi River &
Great River Greening***

in cooperation with

Flint Hills Resources, LP
Flint Hills Resources, LP Pine Bend
Inver Grove Heights, Minnesota

for the

2009

COMMUNITY PARTNER OF THE YEAR



Before



After

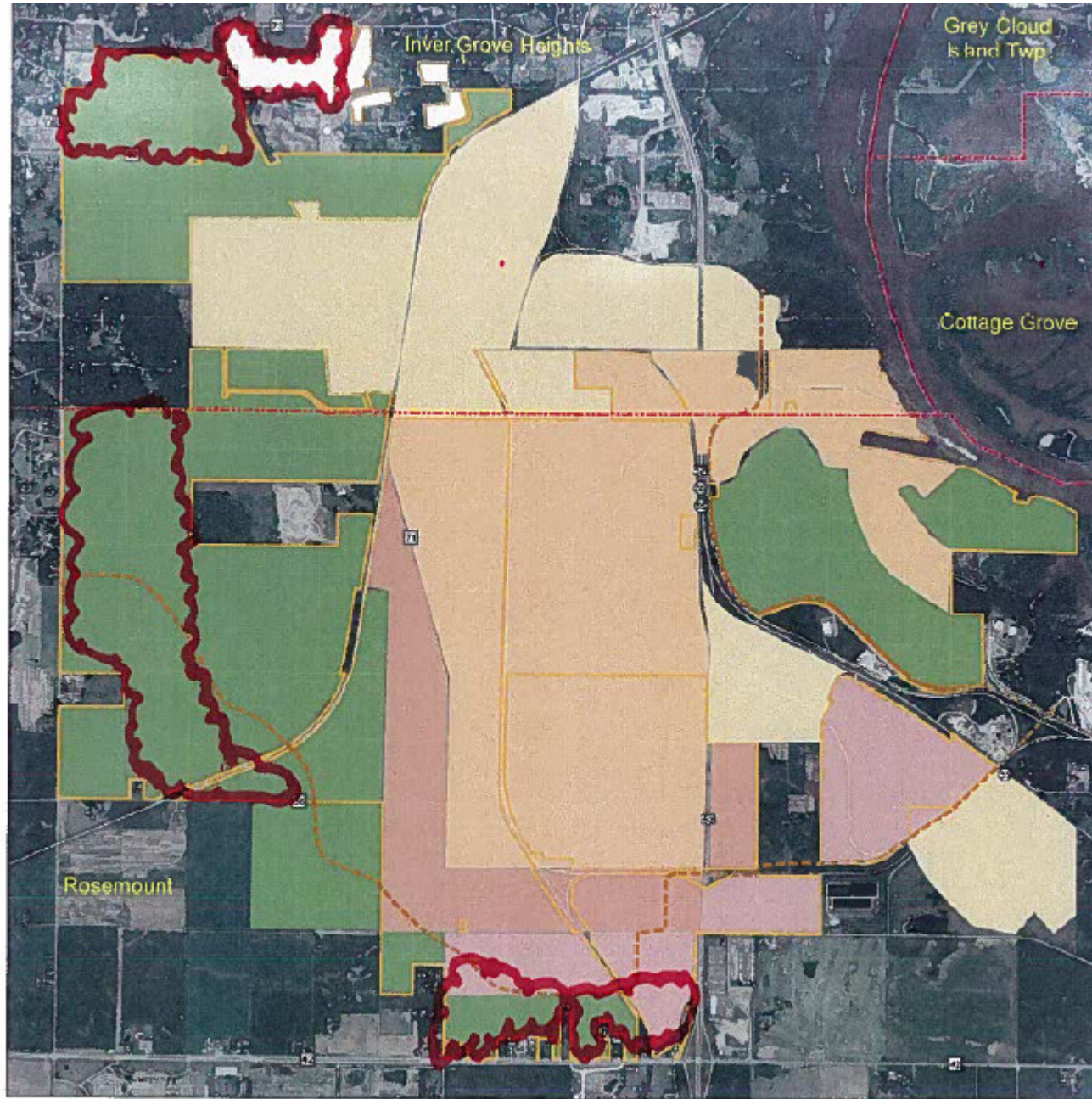






What's next?

- More tree planting?
- More restoration areas?
- More programs?
- Potentially available planning areas for discussion?



Flint Hills Resources Long Range Master Plan
Dakota County, Minnesota

**AREAS
AVAILABLE ?**